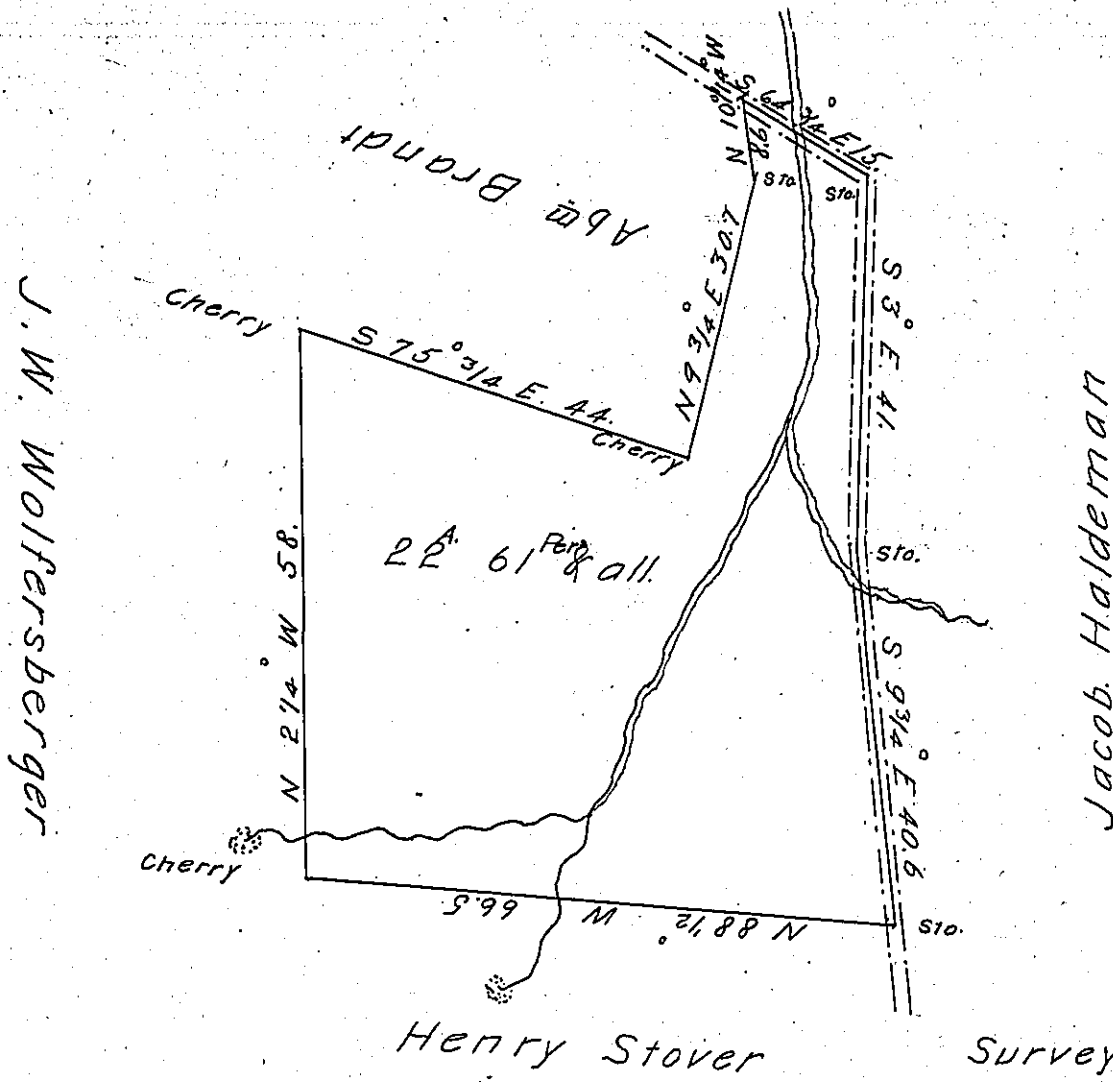


True Meridian Courses
Var - 4 1/4° W



Surveyed May 1st 1868.
By Tho^s Kramer
for G. W. Mase Dep⁻ Sur

The above discribed tract of land is Situate in Londonderry township in the County of Lebanon. Cont^d Twenty two acres. Sixty one perches and all^{cs} of Six per cent. Being part of a larger tract of land of 343 acs & all^{cs} of Six per Ct. Surveyed to Robert Boyd the 14th day of March A.D. 1754. On Warrant dated the 16th day of January A.D. 1752. The above Surveyed May 1st A.D. 1868. To John Burkholder.

By Tho^s Kramer
for G. W. Mase Dep⁻ Sur

To J. M. Campbell Esq.
Surveyor General of Penn^a }

IN TESTIMONY that the above is a copy of the original remaining on file in the Department of Internal Affairs of Pennsylvania, made conformably to an Act of Assembly approved the 16th day of February, 1833, I have hereunto set my Hand and caused the Seal of said Department to be affixed at Harrisburg, this first day of February 1904

James P. [Signature]
Secretary of Internal Affairs.